

**Priority Rates\***  
 \$17,250 Member  
 \$19,300 Non-Member

**Standard Rates**  
 \$17,750 Member  
 \$19,880 Non-Member

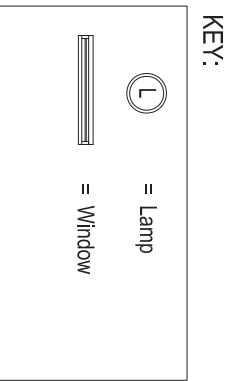
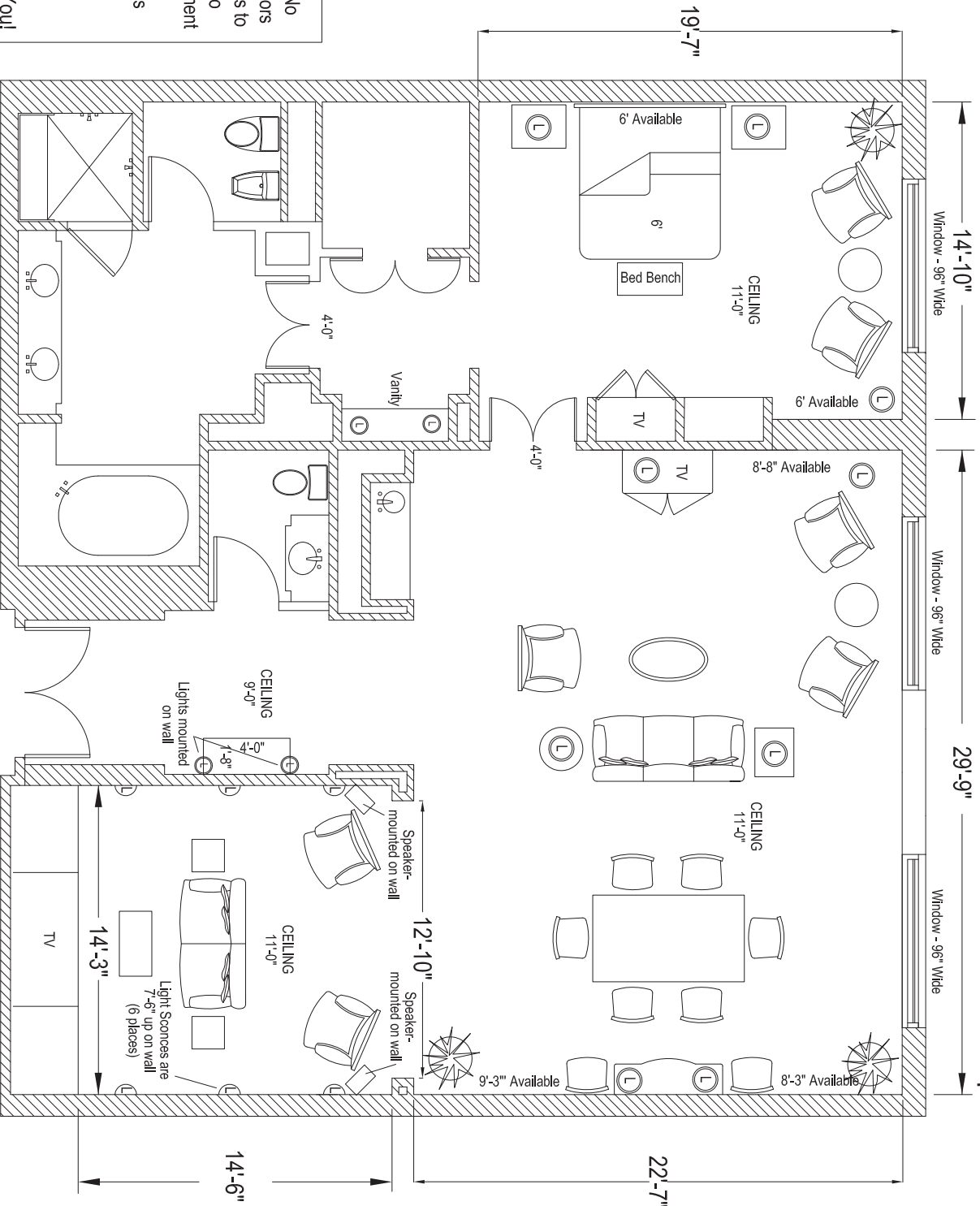
\*Priority Rates apply through May 6, 2011.  
 HPA contracts received after May 6th  
 will be charged the Standard Rate



THE GLOBAL STAGE FOR INNOVATION  
 PRODUCED BY CEA

# 2012 International CES January 10-13, 2012 Venetian Tower Exhibit Suites

**Renaissance Media Suite**  
 Living Space 890 sq ft  
 Bedroom 290 sq ft  
**Total 1180 sq ft**



Exhibitors will have the option to remove beds only. No other furniture will be removed from the suite. Exhibitors will have the option of hiring Venetian Facility Services to move furnishings around within the suite or moved into the restroom for storage. A Venetian furniture movement fee will apply. Exhibitors are not permitted to move furnishings on their own. A fine will be assessed if this policy is broken. There are a limited number of items which cannot be moved including the armoire and entertainment center. Please refer to your Exhibitor Manual for additional rules and regulations.

Thank You!

- Please note that there are two types of Renaissance Suite layouts - the one that you see above and a mirror-image layout.
- All dimensions are approximate and subject to vary in size per suite.
- Exhibitor may check-in on Sunday, January 8 and must check out on Saturday, January 14.