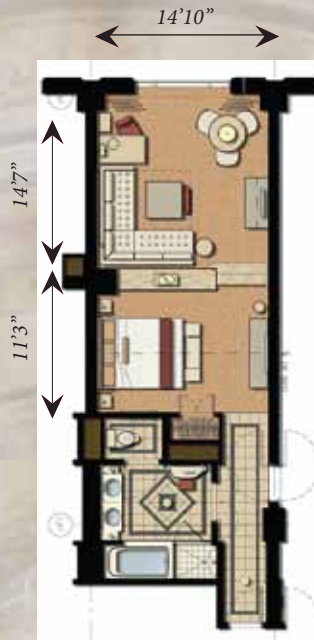


VENETIAN TOWER



PIAZZA SUITE



LUXURY SUITE



BELLA SUITE

Suite Type	Sq. Ft.	2012 CES Member Rate	2012 CES Non-Member Rate
Piazza	878	\$25,080.00	\$28,475.00
Luxury	404	\$7,550.00	\$8,570.00
Bella	471	\$10,000.00	\$11,380.00

Exhibitors may check-in to their assigned suite at 8 a.m. on Sunday, January 8 and must check out of the suite by 5 p.m. on Saturday, January 14. Show dates are January 10-13.

Please note there are two types of each suite—the floor plan you see above and a mirror image layout. All dimensions are approximate and subject to vary in size per suite. Exhibitors will have the option to remove beds only. No other furniture will be removed from the suite. Exhibitors will have the option of hiring Venetian Facility Services to move furnishings around within the suite or moved into the bathroom for storage. A Venetian furniture movement fee will apply. Exhibitors are not permitted to move furnishings on their own. A fine will be assessed if this policy is broken. There are a limited number of items which cannot be moved including the armoire and entertainment center. Please refer to your Exhibitor Manual and Contract Addendum for additional rules and regulations.

FOR ADDITIONAL QUESTIONS, PLEASE CONTACT BOBBY BAUMLER AT BBAUMLER@CE.ORG.